

GSSI GROUP

LED GREENLIGHTING

Save Energy . . . Save Money . . . Save the Earth

Model SLU-112 Street Light

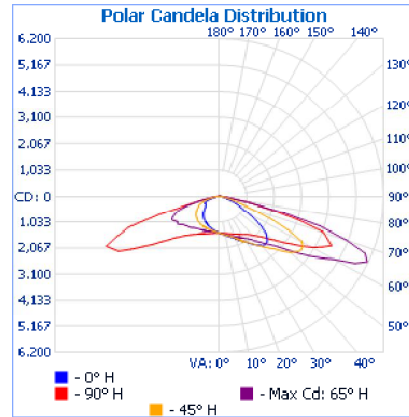


Specifications and Characteristics

Lighting	
Luminaire:	112 LEDs IESNA: LM-63; LM-79; LM-80
Rated Lumens:	11,000
Max Candela:	6161.0 at Horizontal: 65°, Vertical 65°
Correlated Color Temperature (CCT):	Pure White: 5,000 ~ 7,000 K
Color Rendering Index (CRI)	Ra > 75
Photometry:	Type B
Warranty:	8 Years, 60,000 hrs.
Electrical	
LED Watts:	112W
Total Watts:	132W
Rated Voltage:	90 - 305V (480V w/ Transformer)
Input Wattage:	112W
IP Rating:	65
Certification:	UL, TUV, GS, CE, RoHS
Environmental	
Temperature Range Ambient:	-30°C ~ 50°C
Humidity Range	10% ~ 90% relative humidity
Packing Information	
Dimension:	29.0(l)x12.4(w)x3.5(h)
Net Weight:	23.6 lbs
Pieces per carton:	1

User adjustable 'JCT wedge angle' to increase street side illumination and decrease house side illumination.

Includes an ANSI C136.10 compliant standard receptacle to accept GSSI's JCT model PC-10C electronic photcontrols utilizing a 3-prong locking plug.



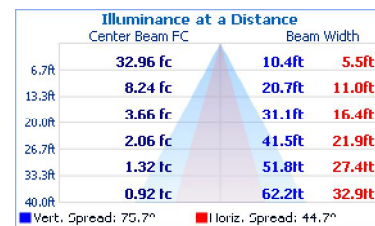
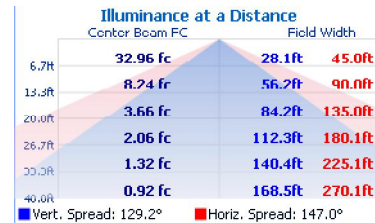
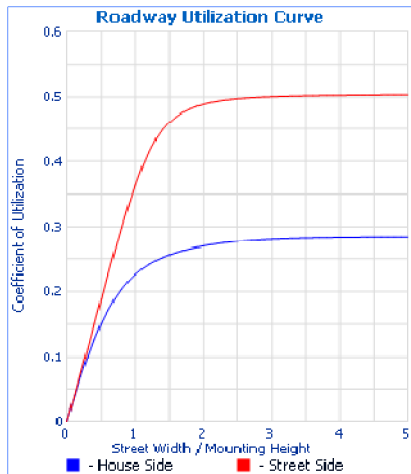
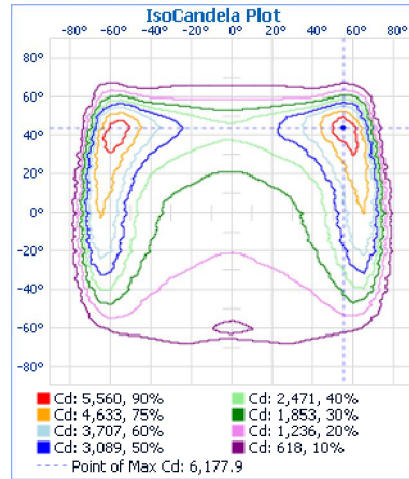
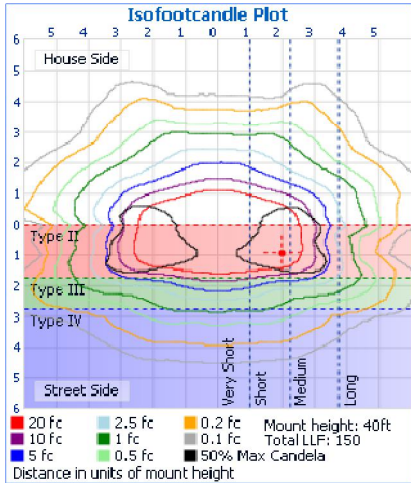
Roadway Summary		
Cutoff Classification:	CUTOFF	
Distribution:	TYPE II, SHORT	
Max CD, 90 Degree Vertical	25.8	
Max CD, 80 to <90 Degree:	683.3	
	Lumens	% Lamp
Downward Street Side:	5,873.7	49.9%
Downward House Side:	3,356.4	28.5%
Downward Total:	9,230.1	78.5%
Upward Street Side:	0.0	0.0%
Upward House Side:	0.0	0.0%
Upward Total:	0.0	0.0%
Total Lumens:	9,230.1	78.5%

GSSI GROUP

LED GREENLIGHTING

Save Energy . . . Save Money . . . Save the Earth

Model SLU-112 Street Light



Lumens Per Zone					
Zone	Lumens	% Total	Zone	Lumens	% Total
0-10	141.2	1.5%	90-100	0.0	0.0%
10-20	433.9	4.7%	100-110	0.0	0.0%
20-30	760.9	8.2%	110-120	0.0	0.0%
30-40	1,140.9	12.4%	120-130	0.0	0.0%
40-50	1,593.3	17.3%	130-140	0.0	0.0%
50-60	2,047.0	22.2%	140-150	0.0	0.0%
60-70	2,144.9	23.2%	150-160	0.0	0.0%
70-80	914.2	9.9%	160-170	0.0	0.0%
80-90	59.0	0.6%	170-180	0.0	0.0%

Zonal Lumen Summary			
Zone	Lumens	% Lamp	% Luminaire
0-30	1,335.9	11.4%	14.5%
0-40	2,476.8	21.1%	26.8%
0-60	6,117.1	52.0%	66.2%
60-90	3,118.2	26.5%	33.8%
0-90	9,235.3	78.5%	100.0%
90-180	0.0	0.0%	0.0%
0-180	9,235.3	78.5%	100.0%

Efficiency Total: 78.5%